

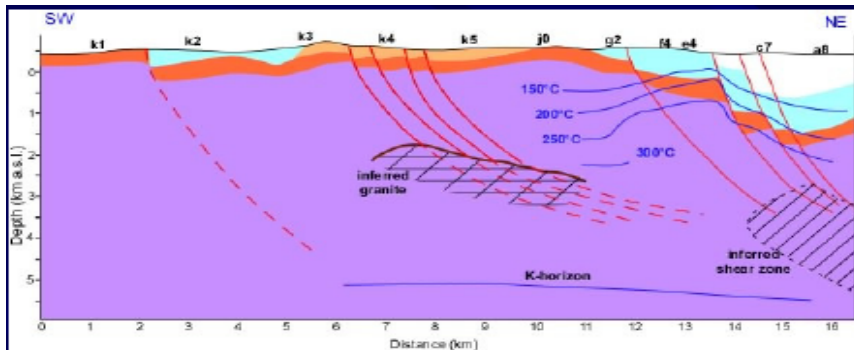
2D inversion of a magnetotelluric profile in Travale geothermal field using invariant responses

José M. Romo-Jones*, Adele Manzella** and Catalina Mayorga**



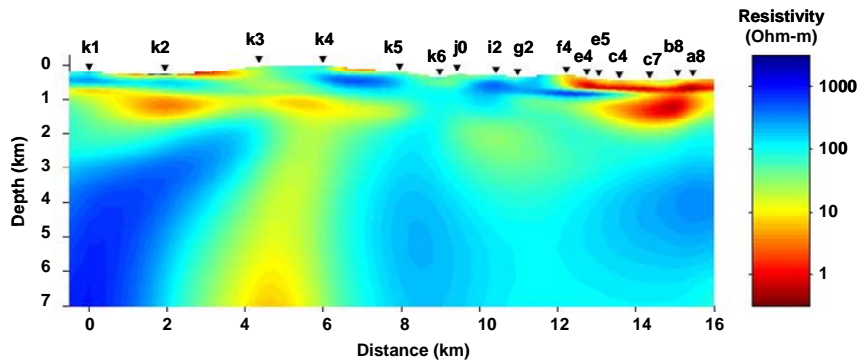
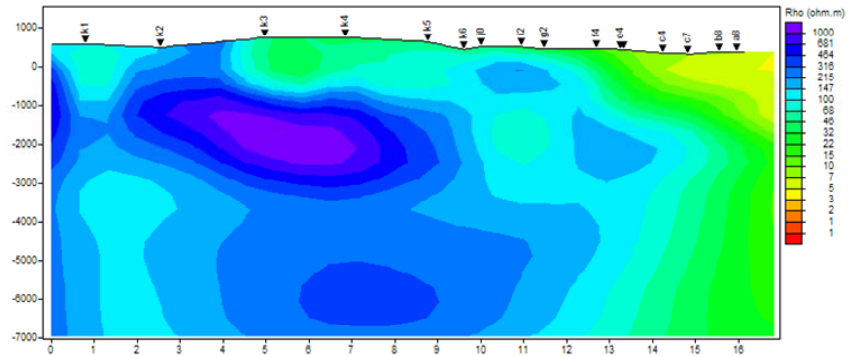
Workshop 2

Exploring high temperature reservoirs: new challenges for geothermal energy



TE and TM data inversion

The traditional 2-D approach for magnetotelluric interpretation oversimplifies the problem and utilizes only one part of the information contained in the measured impedance tensor



Invariant responses

